



# WIN-911 Software from GE Digital

## Improving operator efficiency with real-time alarm notifications

### Notify the right person, at the right time, for faster alarm resolution

Make sure out-of-spec and critical events trigger a real-time alarm so your teams can take the right action, fast. WIN-911 Software from GE Digital provides easy integration with iFIX from GE Digital to help you improve the reliability of alarm notification for quick resolution and improved uptime.

As the most widely used alarm notification platform, WIN-911 works with iFIX to provide real-time notification to monitor operations and notify personnel of problem conditions. This proven software enables you to create a notification workflow tailored to your specific needs. You can filter, escalate, and direct alarms to any number of recipients using virtually any device – including mobile phones, desktop computers, and tablets.

#### Outcomes

- Increase operational efficiency, uptime, and reliability by improving alarm notification and speeding response with a proven, widely used software solution
- Improve asset, personnel, and public safety: greater alarm awareness and faster resolution lowers risk
- Reduce downtime with notification anywhere, anytime, to centralized and remote teams
- Optimize operations with alarm logging and reports for continuous improvement
- Drive insight into common errors or maintenance requirements with real-time notification
- Reduce time-to-value with quick configuration and easy integration to GE Digital's software

### 01 Increase resolution performance with timely alarm notification

Achieve complete freedom to create notification workflows the way you want them, escalating alarms and/or filtering information to any number of recipients. You can vary notifications depending on alarm severity, whether or not an alarm is acknowledged, what date or time the alarm is occurring, and many other user-configurable attributes of the alarm context.

### 02 Improve alarm response by sending notifications to the right person based on staff schedules

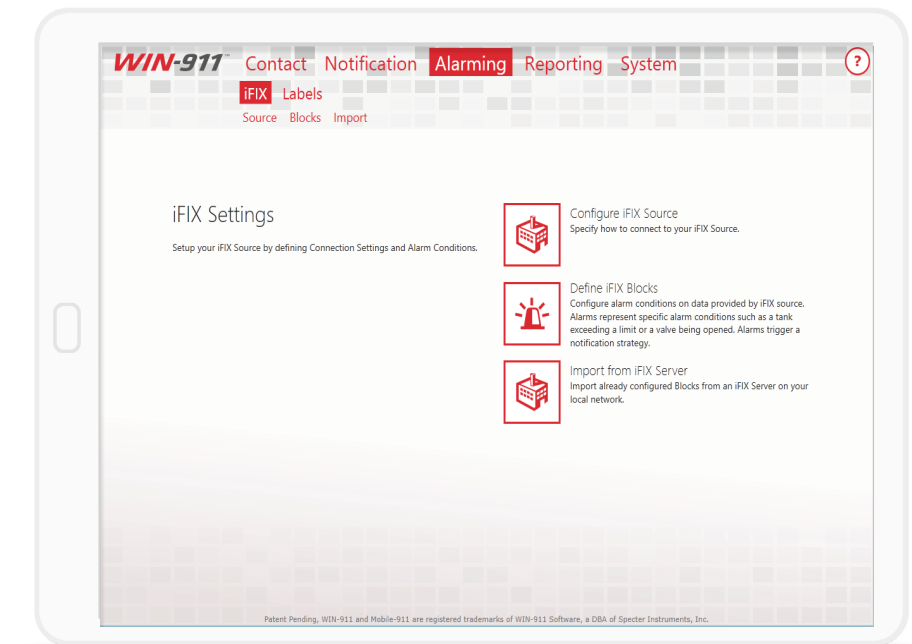
You can add staff schedules to the alarm notification system, ensuring that alarms reach the right person based on availability. WIN-911 knows who is “on shift” at the time of the alarm. Have a difficult schedule? No problem! WIN-911 supports complex shift scheduling to meet your needs.

### 03 Simplify initial set-up and on-going system maintenance

WIN-911 connects directly to GE Digital's HMI/SCADA software, allowing you to simplify configuration, optimize performance, and pass acknowledgements and other data back to the SCADA. You can determine which alarms to monitor by importing or setting up subscriptions based on filters. With the direct data integration with iFIX, you don't have to manage a second set of alarms within WIN-911, reducing set-up time and on-going system management.

### 04 Save time with WIN-911 managing the complexity of standards and protocols

Take advantage of one- or two-way email notifications for different security protocols to comply with control network security standards. SMS notifications support standards and modems used worldwide, and character sets for all major spoken languages. You can drive notifications via Voice over Internet Protocol (VoIP), fixed/analog lines, and plant announcement systems.



As a value-added capability, WIN-911 Essential is available for free to licensed iFIX customers using iFIX Version 5.8 and later.\*

*Nestlé integrated HMI/SCADA from GE Digital with WIN-911 for mobile refrigeration alarm alerts, significantly reducing response time to less than 10 minutes and virtually eliminating production downtime.*



# WIN-911 Software from GE Digital

## Improving operator efficiency with real-time alarm notifications

### Features

- Flexible, convenient notification, delivered in preferred languages, on your choice of device: email, voice, mobile, and SMS
- Escalation engine with group-based alarm notification, retries, and acknowledgement
- Simple notification schedules with group start and repeat delays
- Unlimited personnel contacts, unlimited alarm groups (available with upgrade from Essential)
- Easy scheduling with common shifts provided
- Escalation of alarms for different scenarios (available with upgrade from Essential)
- View current and historical alarms/notifications with WIN-911 Log Viewer
- Control access with passwords and acknowledgement codes
- Ability to configure for redundancy and set up “watchdogs” to monitor SCADA and WIN-911 connection

### Software requirements

- Win-911 is available for iFIX versions 5.8 and later.
- Existing iFIX customers are entitled to WIN-911 Essential; no additional license fees.\*
- “Essential” version is included in every iFIX development license.\*
- Upgrades from Essential to Premium or Ultimate are available.
- For software and hardware requirements, please visit [www.win911.com](http://www.win911.com).

\*This offer is subject to change.



Used at more than 10,000 facilities around the world, WIN-911 provides a proven alarm notification platform.

### Three Tiers of WIN-911 Software Available from GE Digital

Feature	Essential (free*)	Premium	Ultimate	HW Required
OPC DA	-	✓	✓	
Basic Tactics & Strategies	✓	✓	✓	
Advanced Tactics & Strategies	-	-	✓	
Reporting	✓	✓	✓	
Remote Acknowledgement	✓	✓	✓	
Alarm Count	50,000	50,000	50,000	
Voice (VoIP)	-	-	✓	-
Voice (TAIP)	-	-	✓	✓ (additional cost)
E-mail	✓ (2 Seats)	✓ (255 Seats)	✓ (255 Seats)	-
SMS (Cellular Modem)	✓ (2 Seats)	✓ (255 Seats)	✓ (255 Seats)	✓ (additional cost)
Mobile-911	✓ (2 Seats)	✓ (10 Seats)	✓ (25 Seats)	-

Take advantage of proven alarm notification to improve operational efficiency, uptime, and reliability. With easy integration to HMI/SCADA, you can quickly improve asset, personnel, and public safety through greater alarm awareness.

LEARN MORE



# WIN-911 Software from GE Digital

## Improving operator efficiency with real-time alarm notifications

### Services

In the world of Industrial Internet of Things (IIoT), organizations are able to optimize productivity, reduce costs, and achieve operational excellence. No matter where you are on your IIoT journey, GE Digital and its experienced global partners have the right services offering for you.

[Advisory Services](#) We can help you plan and start your IIoT journey with fourth generation HMI/SCADA in a way that aligns to your specific business outcomes.

[Managed Services](#) We can help you maintain your critical machines from one of our remote locations around the world using model-based predictive-analytic technology.

[Implementation Services](#) Our experienced global Automation partners can implement a collaborative, multi-generational program that marries your existing investments to the right enhancements and technology.

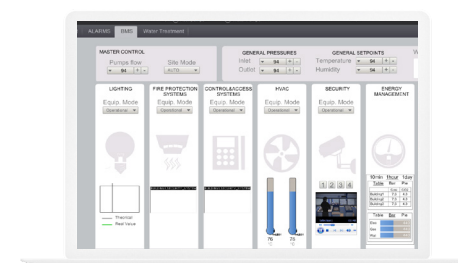
[Education Services](#) We specialize in education services to ensure that you're leveraging our solutions to the fullest extent with our training and certificate programs.

[GlobalCare Support Services](#) Let us help by ensuring that your business continues to operate efficiently, all while mitigating risks to your investments.

[Wurldtech Security Services](#) Our solutions provide industrial-grade security for a wide range of OT network and application topologies.

### Related products

GE Digital's [HMI and SCADA](#) suite helps you precisely monitor, control, and visualize every aspect of your operations, enabling operators to make the best decisions faster.



# PREDIX

#### [iFIX](#) →

Gain visibility into your operations and secure agility for smarter decision making that drives results.

#### [CIMPLICITY](#) →

Drive real-time visibility for smart operators with true client-server-based visualization and control.

#### [Predix](#) →

Innovate and transform your business with the cloud-based operating system for the Industrial Internet, purpose-built for industry.

### Continue your IIoT journey

Transforming your business requires innovative foundational solutions that lay the groundwork for optimized performance.



#### [Cyber Security for OT](#) →

Take the right actions to increase resilience, help ensure safety, and maintain availability across your operational technology (OT) environment.



#### [Workflow](#) →

Guide operators with dynamic, interactive electronic work instructions and eSOPs for more consistent operations and optimized processes.



#### [Mobile](#) →

Take industrial automation to a new level, transforming operational data into actionable information, accessible anywhere, anytime.

#### About GE

GE (NYSE: GE) is the world's Digital Industrial Company, transforming industry with software-defined machines and solutions that are connected, responsive and predictive. GE is organized around a global exchange of knowledge, the "GE Store," through which each business shares and accesses the same technology, markets, structure and intellect. Each invention further fuels innovation and application across our industrial sectors. With people, services, technology and scale, GE delivers better outcomes for customers by speaking the language of industry.

©2016 General Electric. All rights reserved. \*Trademark of General Electric. All other brands or names are property of their respective holders. Specifications are subject to change without notice. 10 2016

#### Contact

Americas: 1-855-YOUR1GE (1-855-968-7143)  
gedigital@ge.com  
[www.ge.com/digital](http://www.ge.com/digital)